



**BUILD THE
BUSINESS AND
LIFE OF YOUR
DREAMS.**



MISSION & VISION



OUR MISSION

Our mission at Once More Nexgen Business is to offer high-quality, innovative products that enhance the well-being and lifestyles of our customers.

OUR VISION

At Once More Nexgen Business, our vision is to empower individuals worldwide by providing them with exceptional products and business opportunities that foster personal growth, financial freedom, and a sense of community.



Our Mission



Our Vision

ABOUT US



At Once More Nexgen Business, we believe in creating opportunities for individuals to achieve financial independence through our cutting-edge product offerings and lucrative compensation plan. Whether you're seeking to enhance your lifestyle, grow a sustainable income, or become a part of a vibrant community, we offer everything you need to succeed!

WHAT WE OFFER



- 01** 24×7 Support 
- 02** Business Strategy & Development 
- 03** Branding & Marketing Solutions 
- 04** Digital Growth Services 
- 05** User-friendly Interface 
-  Market Updates 

JOIN INCOME

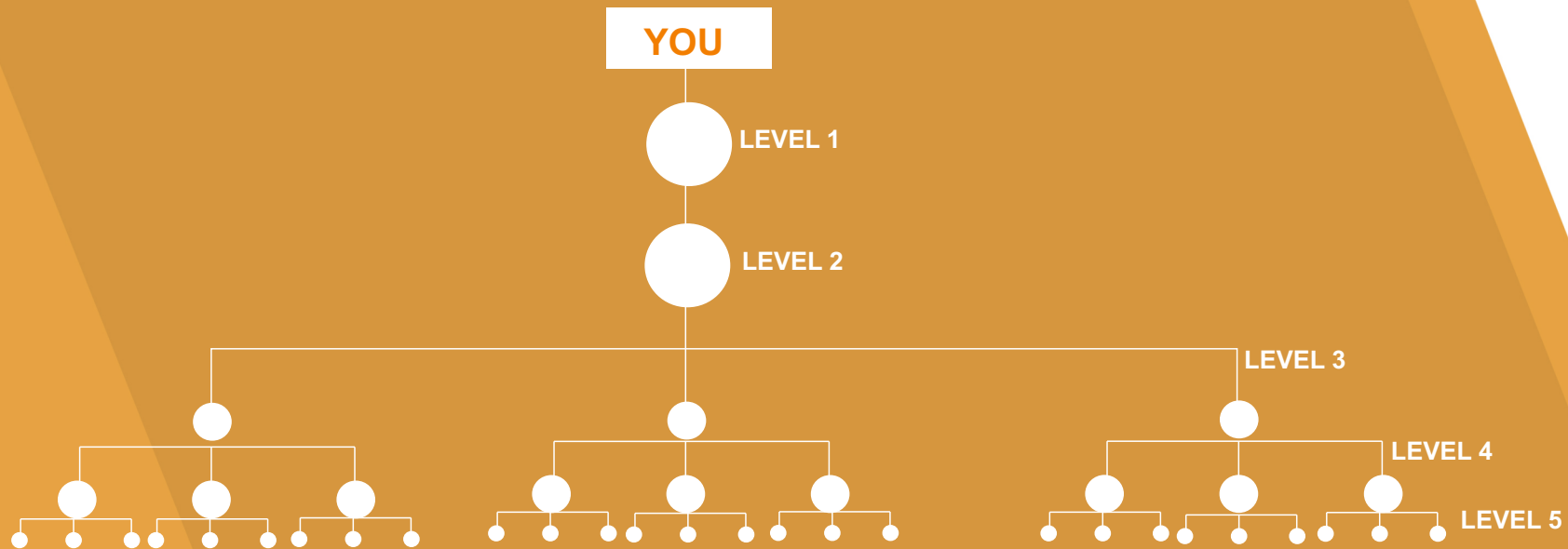


RS. 100+400=500=Product =400 BV

TYPE OF INCOME PLAN

- Single Leg Income
- Level Income
- Repurchase Income
- Salary Income
- Amazing Rewards No Time Limit
- Company Turnover Income
- Non working Income

Single Leg Income



Level Income

LEVEL	MEMBER	BV	%	AMOUNT	SALARY	REWARDS
LEVEL 1	3	1200	10%	120		
LEVEL 2	9	3600	10%	360		
LEVEL 3	27	10800	10%	1080		
LEVEL 4	81	32400	8%	2592		
LEVEL 5	243	97200	7%	6804	1500x6 Months	
LEVEL 6	729	291600	5%	14580	2500x6 Months	
LEVEL 7	2187	874800	4%	34992	5000x6 Months	
LEVEL 8	6561	2624400	3%	78720	10000x6 Months	
LEVEL 9	19683	7873200	2%	157464	25000x6 Months	
LEVEL 10	59049	23619600	1%	236196	50000x6 Months	



ELECTRIC IRON



Mixer Grinder



Couple Dress



Gold Set



Electric Scooty



Alto Car

* Salary will be start after completing the particular Level starting from Level 5

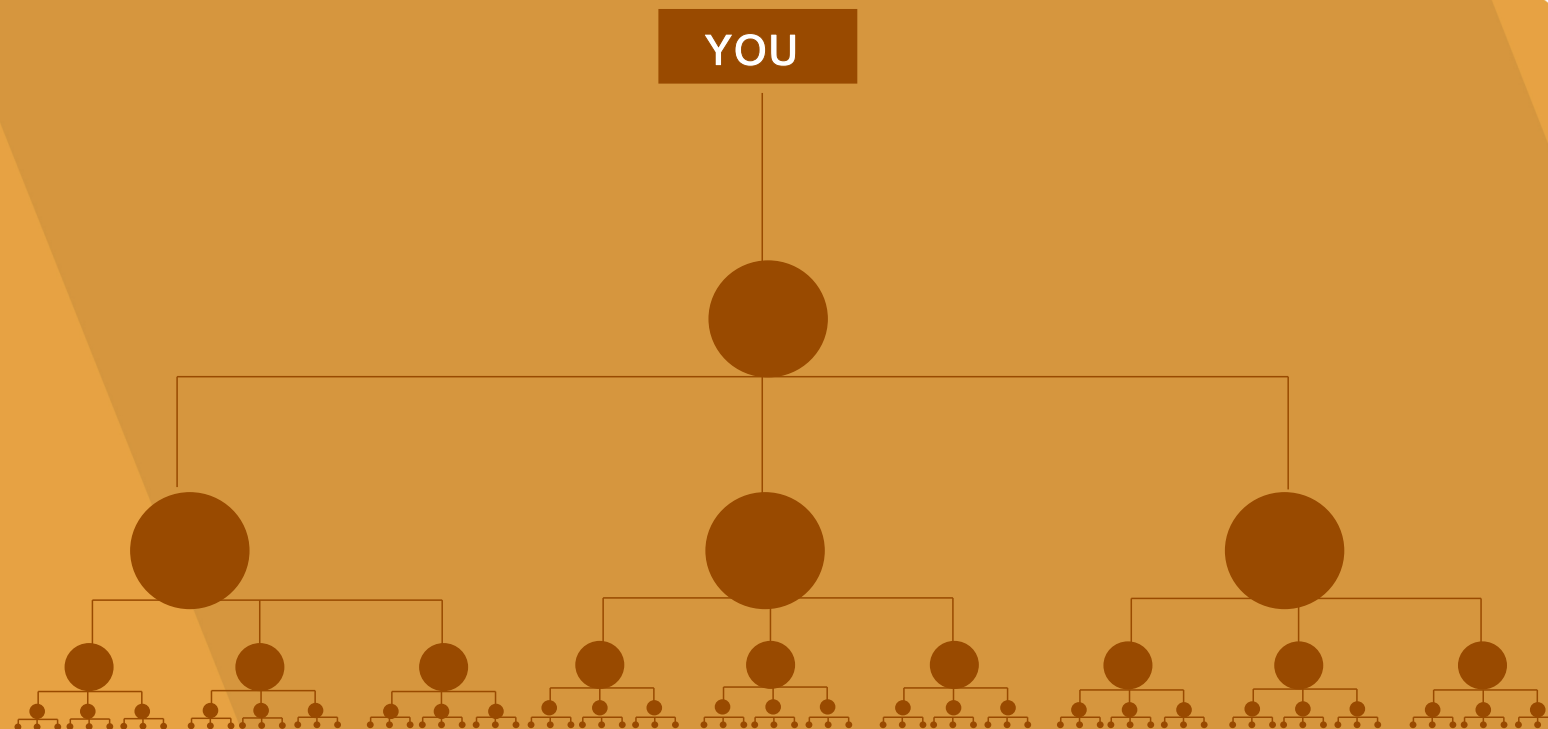
* After completing Level 10 company will provide extra 4% as company turnover Income which will be shared among Level 10 members.

Repurchase Income



Level	Team	Commission (%)	Minimum Repurchase	Total Repurchase	Commission (Rs.)
1.	3	8	500 BV	1,500	120
2.	9	8	500 BV	4,500	360
3.	27	8	500 BV	13,500	1,080
4.	81	8	500 BV	40,500	3,240
5.	243	8	500 BV	1,21,500	9,720
6.	729	5	500 BV	3,64,500	18,225
7.	2,187	4	500 BV	10,93,500	43,740
8.	6,561	3	500 BV	32,80,500	98,415
9.	19,683	2	500 BV	98,41,500	1,96,830
10.	59,049	1	500 BV	2,95,24,500	2,95,245

Amazing Rewards & Incentives



इस इनकम को पाने के लिए तीन लेग का होना जरूरी है। तीनों लेग से क्रमशः 30%-30% का Business होना जरूरी है। जो आपके जुड़ने की दिनांक से शुरू होगा यानि आपको अधिक से अधिक Repurchase करना है और इसके लिए किसी तरह की कोई समय की पाबंदी नहीं है यानि इसे कभी भी अचीव कर सकते है।

Repurchase (BV)	Reward	Incentive
5,00,000	Two wheeler (Finance)	2% for EMI
20,00,000	Four wheeler (Finance)	3% for EMI
50,00,000	Gold Set	5% on Team Business
1,00,00,000	Flat (Finance)	5% on Company Turnover

Amazing Rewards & Incentives



आप समान की खरीदारी कर 5 दिन तक जांचे अगर आपको Products बाजार से सस्ता और अच्छा लगे तो आगे लोगों को बताएं।

Days	Level	Team	Commission	Minimum Repurchase	Total Repurchase	Commission (Rs.)
You	0	1	15	500 BV	500	75
5	1	3	8	500 BV	1,500	120
10	2	9	8	500 BV	4,500	360
15	3	27	8	500 BV	13,500	1,080
20	4	81	8	500 BV	40,500	3,240
25	5	243	8	500 BV	1,21,500	9,720
30	6	729	5	500 BV	3,64,500	18,225
Total					5,46,500	32,820
(+)2% Incentive						10,924
Grand Total						43,744

* Electric Scooty will be given only after achieving 5lacs business (mandatory 3 legs with minimum 30% business each)

Non Working Income

You will transfer automatically to auto pull box after reaching Level 1 (3 legs)

Example:

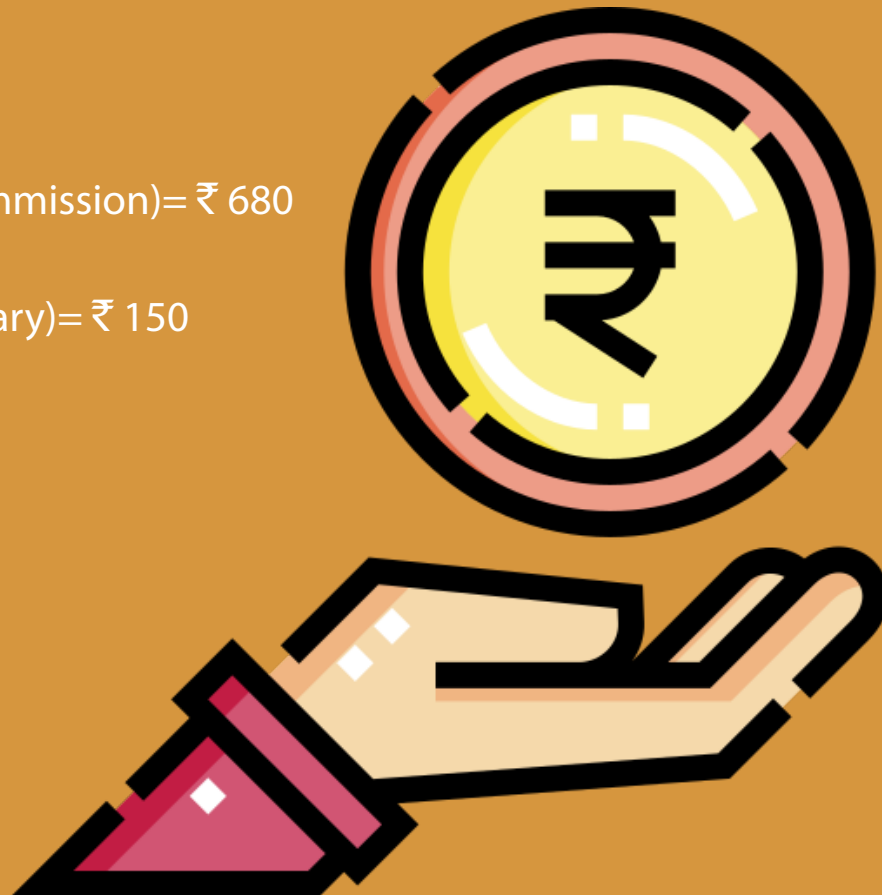
If you achieve Level 5

Your Income will be as follows:

10% of ₹ 6804(Level5 normal commission)= ₹ 680

10% of ₹ 1500 (Level5 normal Salary)= ₹ 150

Salary will be given 6 months





📍 At Kaithi, Robertsganj Ghorawal Road,
PO Robertsganj, Dist Sonebhadra(UP)

✉️ glema@gmail.com

☎️ +91 9525559966

🌐 www.glema.in

ONCE MORE NEXGEN BUSINESS

A/C NO. -7153585585

IFSC -IDIB000S636